

DUE DATE _____

NAME _____

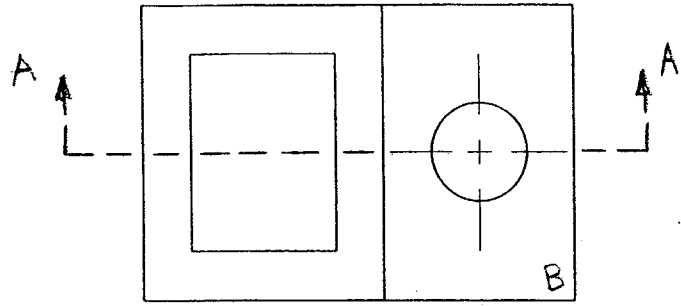
ENGR/DRAFT 105 Assignment #11, Isometric Sections

- 1) Draw mechanically the full-section isometric.

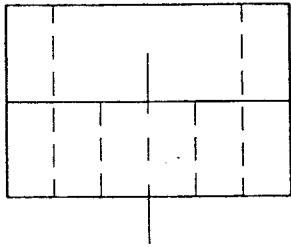
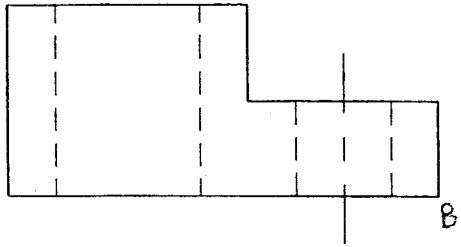
- 2) Extra Credit: Draw mechanically the half-section isometric.
- 3) Extra Credit: Draw mechanically the half-section isometric (Plate 22).

Staple this sheet to the front of your drawings in the correct order. Write your name at the top of the page. Write your name on each drawing.

NAME _____



1) Draw mechanically, full scale, the isometric sectional (full-section) as defined by removing the piece defined by A-A.

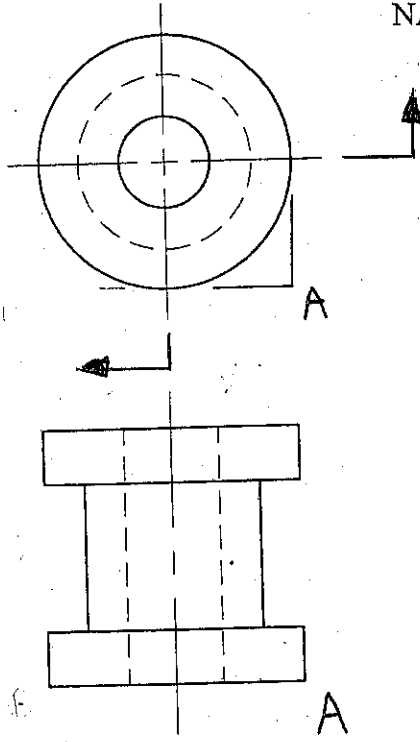


↓
B

Extra Credit

NAME _____

Extra Credit

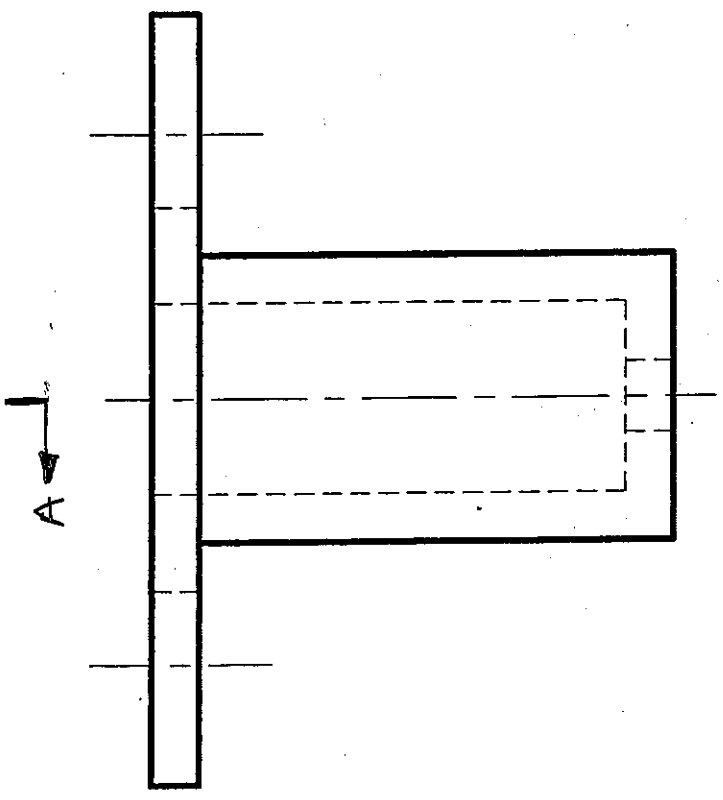
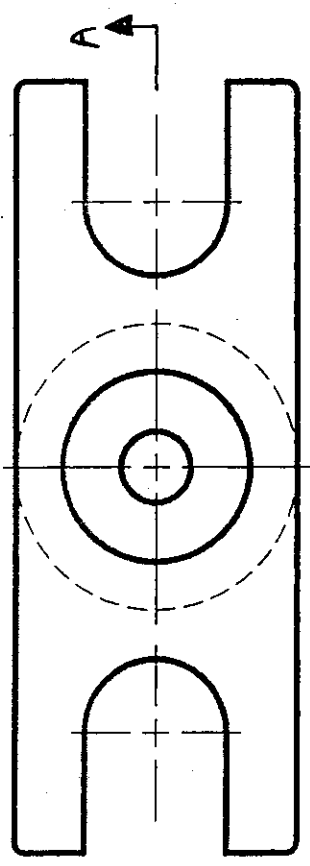


- 2) Draw mechanically, full scale, the isometric sectional (half-section) as defined by removing the piece defined by A-A.



Extra Credit

DRAW MECHANICALLY, FULL SCALE, THE ISOMETRIC SECTIONAL (HALF-SECTION) AS DEFINED BY REMOVING THE PIECE DEFINED BY A-A.



Extra Credit