

DUE DATE _____

NAME _____

ENGR/DRAFT 105 Assignment #2, Lettering

The total assignment is worth 10 Points Max

- 1) Practice vertical lettering (Worksheet 3.5).
 - Single strokes.
 - Good lettering.
 - 2 passes each (should have repeated letter both in the grids and in the blank space after the grid).

- 2) Practice 1/8" and 1/4" lettering (Worksheet 3.6)
 - Use the guidelines provided to letter the drawing notes and dimensions in the appropriate spaces. Use 1/8" or 1/4" (as indicated) uppercase standard engineering lettering.
 - Using an Ames Lettering Guide (provided to you in class), draw 1/8" light guidelines (using the .3 mm or equivalent hard pencil) in the blank area of the sheet. Then letter the following words and mixed number, twice, using 1/4" letterings (use the 0.7 or 0.9 mm pencil, and make thick, dark, and sharp letters) exactly as shown (i.e., CAPITAL letter, the same words on each line, skip two 1/8" lines between lines):

LETTERING IS EASIER

IF YOU REMEMBER TO

USE GUIDE LINES

$2\frac{3}{4}$

Note: Be sure to use bond paper (opaque) or velum paper (transparent) underneath your drawings. Smooth paper to remove any bubbles underneath. When using compasses, put several pieces of masking or drafting tape under the point. NEVER use scotch taper on the drafting tables – it is next to impossible to remove, and may damage the table in the process.

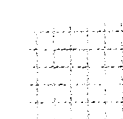
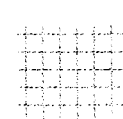
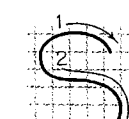
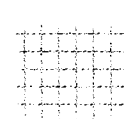
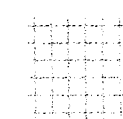
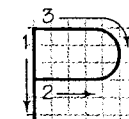
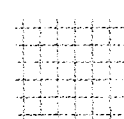
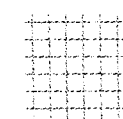
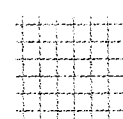
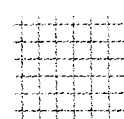
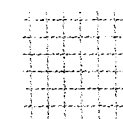
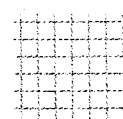
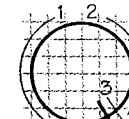
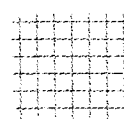
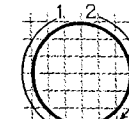
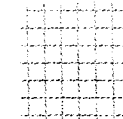
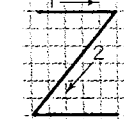
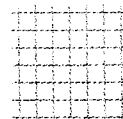
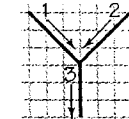
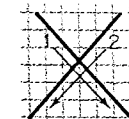
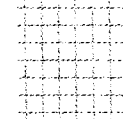
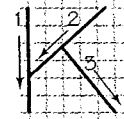
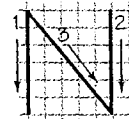
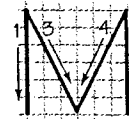
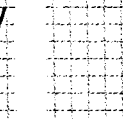
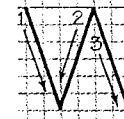
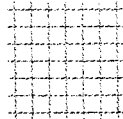
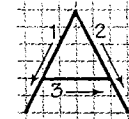
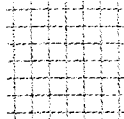
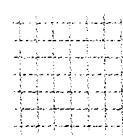
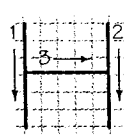
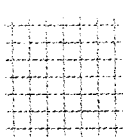
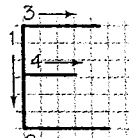
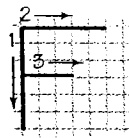
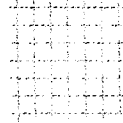
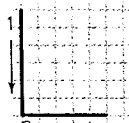
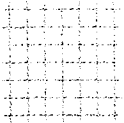
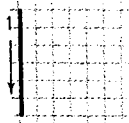
Staple this sheet to the front of your drawings in the correct order. Write your name at the top of the page. Write your name on each drawing.



Worksheet 3.5

Vertical lettering practice

Repeat each letter on the blue grid provided, paying careful attention to the proportions and stroke direction shown in the example. Then repeat the letter once more in the white space.



Make copies of these pages to use for additional practice.



Worksheet 3.6

1/8 Inch lettering practice

Use the guidelines provided to letter the drawing notes and dimensions in the appropriate spaces. Use 1/8" uppercase standard engineering lettering.

SEE DETAIL A			SAE 1115 - 4 REQUIRED
↙ 2 X .50 - 12 UNC - 2B $\bar{\nabla}$.688			ALL FILLETS AND ROUNDS R.125
ALL MEASUREMENTS IN MILLIMETERS			JAW PLATE SCREW